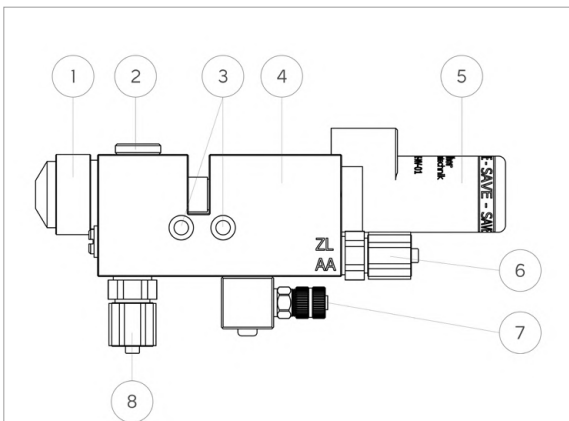
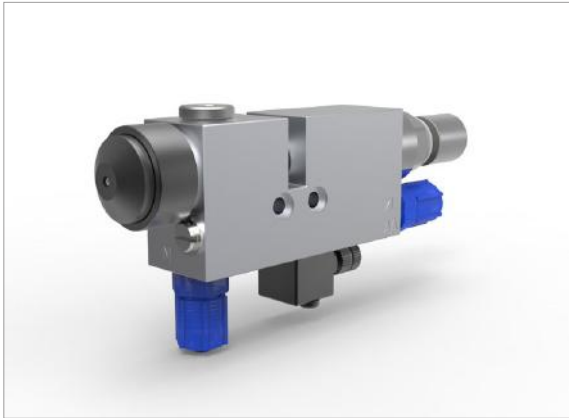




Processing & Application / Spraying / Valve

## SMS-20 – SPRAY VALVE SERIES 20



### USAGE

The Spray Valves of series 20 provide a solid basis for multiple spray applications. The Spray Valves are suitable for an intermitting as well as a continuing application of different media (e.g. oils, separating agents, paint, greases etc.). The valves are controlled via an external, pneumatic 3/2-way valve. The valve needle is opened by the pressure of the compressed air and closed by spring pressure. A separate atomizer air inlet allows you switch the atomizer air for this series independently, regardless of the status of the compressed air.

### CONSTRUCTION

- 1 Nozzle with air cap and retaining ring
- 2 Locking screw
- 3 Fastening thread
- 4 Basic housing
- 5 Raster-needle sensor with SAVE
- 6 Atomizer air connection
- 7 Control air connection
- 8 Material connection

### HIGHLIGHTS

- Different nozzles and air cap combinations for a perfect adaptation to the desired spraying image
- optional sensor available for monitoring the valve needle stroke
- for complex spraying tasks, we offer a variety of adapted nozzle extensions optionally
- optional heating plate available for tempering the valve body
- atomizer air and control air controlled independently

### YOUR BENEFITS

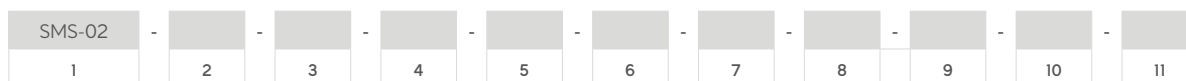
- Possibility of realising a process control in connection with a WALTHER LOGIC Limit Value Module
- Valve for automated application of viscous media
- fast, repeatable installation through integrated centering hollows



# SMS-20 – SPRAY VALVE SERIES 20

## ORDER CODE

(\* STANDARD OPTIONS)



1	Designation	5	Pressure sensor	8	Nozzle type
	Spray Valve Series 20	T00	upper boring with plug*	NON	no nozzle
2	Sealing Type	T02	upper sensor 0 to 2 [Bar]	KLS03	KLS 0,3 [mm]
V	Viton*	T10	upper sensor 0 to 10 [Bar]	KLS05	KLS 0,5 [mm]*
I	Isolast	T50	upper sensor 0 to 50 [Bar]*	KLS08	KLS 0,8 [mm]*
E	EPDM	R00	boring right with plug	KLS10	KLS 1,0 [mm]
3	Needle stroke adjustment	R02	sensor right 0 to 2 [Bar]	KLS15	KLS 1,5 [mm]
R	with sensor*	R10	sensor right 0 to 10 [Bar]	KLS20	KLS 2,0 [mm]
N	without sensor*	R50	sensor right 0 to 50 [Bar]	STA01	standard nozzle 0,1 [mm]
4	Save	6	Special design	STA03	standard nozzle 0,3 [mm]
S	installed*	00	without special version*	STA05	standard nozzle 0,5 [mm]
N	not installed	01	6-kt retaining ring	STA08	standard nozzle 0,8 [mm]
7	Air cap	STA10	standard nozzle 1,0 [mm]	STA15	standard nozzle 1,5 [mm]
N00	no air cap / with DVL*	STA15	standard nozzle 1,5 [mm]	STA03	standard nozzle 2,0 [mm]
S10	air cap marking nozzle (8-10°)	STA25	standard nozzle 2,5 [mm]	STA25	standard nozzle 2,5 [mm]
R15	ring-jet 15°**	SIG01	marking nozzle 0,1 [mm]	SIG01	marking nozzle 0,1 [mm]
F45	flat-jet 45°	SIG03	marking nozzle 0,3 [mm]	SIG03	marking nozzle 0,3 [mm]
F60	flat-jet 60°	SIG05	marking nozzle 0,5 [mm]	SIG05	marking nozzle 0,5 [mm]
F90	flat-jet 90°	DVL-	nozzle extension...*	DVL-	nozzle extension...*

## STANDARD VARIANTS

Item number	Order Code	Item number	Order Code
50010791	SMS-20-F-N-S-T00-00-R15-KLS05	5000xxxx	SMS-20-F-N-S-T00-00-N00-DVL...
50010792	SMS-20-F-N-S-T00-00-R15-KLS08	5000xxxx	SMS-20-F-N-S-T50-00-N00-DVL...
50010795	SMS-20-F-N-S-T50-00-R15-KLS05	5000xxxx	SMS-20-F-R-S-T00-00-N00-DVL...
50010796	SMS-20-F-N-S-T50-00-R15-KLS08	5000xxxx	SMS-20-F-R-S-T50-00-N00-DVL...
50010783	SMS-20-F-R-S-T00-00-R15-KLS05		
50010784	SMS-20-F-R-S-T00-00-R15-KLS08		
50010787	SMS-20-F-R-S-T50-00-R15-KLS05		
50010788	SMS-20-F-R-S-T50-00-R15-KLS08		



Processing & Application / Spraying / Valve

## SMS-20 – SPRAY VALVE SERIES 20

### SPARE PARTS

Item number	Order Code	Designation
5000xxxx	DSV-xx-xx-xx	Nozzle Spray Valve
5000xxxx	VNS-xx-xx-xx-xx-xxxx	Valve needle Spray Valve
5000xxxx	LKS-xx-xx-xx-xxxx	Air cap Spray Valve
50007630		Retaining ring hexagonal
50007629		Retaining ring round
50007205		Valve needle lock with needle stroke sensor
50010422		Valve needle lock
5000xxxx	WST-...	Wearing parts kit for SMS-20 (Standard), VITON

### ACCESSORIES

Item number	Order Code	Designation
50008879	PS2-002-G18-A	Pressure sensor 2 [bar]
50008758	PS1-010-G18-A	Pressure sensor 10 [bar]
50008756	PS1-050-G18-A	Pressure sensor 50 [bar]
50008785		G1/8" Mounting system pressure sensor
50007634	HZP-90-25W-01	Heating plate
50007804	HZP-ISO-01	Insulating plate
50007618		Centering sleeve (2x)
50008400	WLG-40-470-SOFT-500	WALTHER LOGIC Limit Value Module incl. software
50008752	WLVC-30-320-SOFT-323	WALTHER LOGIC Valve Control incl. software
50008746	WLVCM-10-101-SOFT-101	WALTHER LOGIC Valve Control MINI incl. software
50007662	RKS-01	Cleaning kit for valves
50007773	WZS-03	Tool set for valve maintenance
50010323	SAVE-NV-01	SAVE Valve needle lock
5000xxxx	WST- ...	Connecting screw joint matching the valve

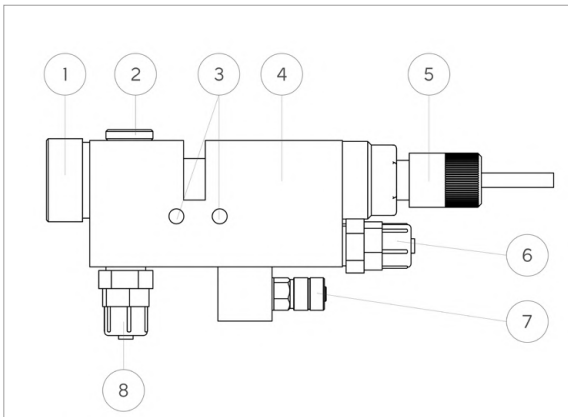
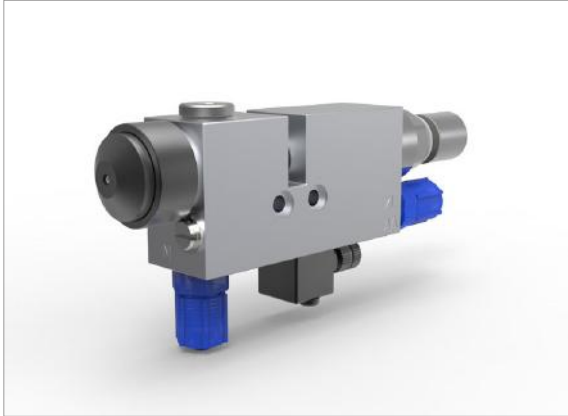
### TECHNICAL DATA

Process pressure	max. 50 [bar]
Control air pressure	max. 6 [bar]
Atomizer air pressure	0,5 to 5 [bar]
Process connection (medium)	G1/4" incl. hose screw joint 6/4
Process connection (air)	hose screw joint 6/4
Dimensions l x w x h	125 (129) x 22 x 79,5 [mm]
Weight	0,5 [kg]



Processing & Application / Spraying / Valve

## SMS-22 – SPRAY VALVE SERIES 22



### USAGE

The Spray Valves of series 22 provide a solid basis for multiple spray applications. The Spray Valves are suitable for an intermitting as well as a continuing application of different media (e.g. oils, separating agents, paint, greases etc.). The valves are controlled via an external, pneumatic 3/2-way valve. The valve needle is opened and closed by compressed air pressure. The valve needle has a compressed-air supported closing which will guarantee a secure locking of the nozzle in this valve series, also under high process pressures. A separate atomizer air inlet allows you switch the atomizer air for this series independently, regardless of the status of the compressed air.

### CONSTRUCTION

- 1 Nozzle with air cap and retaining ring
- 2 Locking screw
- 3 Fastening thread
- 4 Basic housing
- 5 Raster-needle sensor
- 6 Atomizer air connection
- 7 Control air connection
- 8 Material connection

### HIGHLIGHTS

- Pneumatically controlled, active closing of valve needle
- different nozzles and air cap combinations for a perfect adaptation to the desired spraying image
- for complex spraying tasks, we offer a variety of adapted nozzle extensions optionally
- optional heating plate available for tempering the valve body
- atomizer air and control air controlled independently

### YOUR BENEFITS

- Safe valve lock, also for high process pressures
- possibility for realising a process control with a WALTHER LOGIC Limit Value Module
- Valve for automated application of viscous media
- fast, repeatable installation through integrated centering hollows



## SMS-22 – SPRAY VALVE SERIES 22

### ORDER CODE

(\* STANDARD OPTIONS)

SMS-22	-		-		-		-		-		-		-		-		-		-	
1		2		3		4		5		6		7		8		9		10		11

1	Designation	5	Pressure sensor	8	Nozzle type
	Spray Valve Series 22	T00	upper boring with plug*	NON	no nozzle
		T02	upper sensor 0 to 2 [Bar]	KLS03	KLS 0,3 [mm]
<b>2</b>	<b>Sealing Type</b>	T10	upper sensor 0 to 10 [Bar]	KLS05	KLS 0,5 [mm]*
F	FKM*	T50	upper sensor 0 to 50 [Bar]*	KLS08	KLS 0,8 [mm]*
E	EPDM	R00	boring right with plug	KLS10	KLS 1,0 [mm]
I	ISOLAST	R02	sensor right 0 to 2 [Bar]	KLS15	KLS 1,5 [mm]
<b>3</b>	<b>Needle stroke adjustment</b>	R10	sensor right 0 to 10 [Bar]	KLS20	KLS 2,0 [mm]
N	without sensor*	R50	sensor right 0 to 50 [Bar]	STA01	standard nozzle 0,1 [mm]
				STA03	standard nozzle 0,3 [mm]
<b>4</b>	<b>Save</b>	<b>6</b>	<b>Special design</b>	STA05	standard nozzle 0,5 [mm]
S	installed*	00	without special version*	STA08	standard nozzle 0,8 [mm]
N	not installed	01	6-kt retaining ring	STA10	standard nozzle 1,0 [mm]
		<b>7</b>	<b>Air cap</b>	STA15	standard nozzle 1,5 [mm]
		N00	no air cap / with DVL*	STA03	standard nozzle 2,0 [mm]
		S10	air cap marking nozzle (8-10°)	STA25	standard nozzle 2,5 [mm]
		R15	ring-jet 15**	SIG01	marking nozzle 0,1 [mm]
		F45	flat-jet 45°	SIG03	marking nozzle 0,3 [mm]
		F60	flat-jet 60°	SIG05	marking nozzle 0,5 [mm]
		F90	flat-jet 90°	DVL-	nozzle extension...*

### STANDARD VARIANTS

Item number	Order Code	Item number	Order Code
5000xxxx	SMS-22-F-N-S-T00-00-N00-DVLxx-...	5000xxxx	SMS-22-F-N-S-T50-00-N00-DVLxx-...

### SPARE PARTS

Item number	Order Code	Designation
5000xxxx	DSV-xx-xx-xx	Nozzle Spray Valve
5000xxxx	VNS-xx-xx-xx-xxxx	Valve needle Spray Valve
5000xxxx	LKS-xx-xx-xx-xxxx	Air cap Spray Valve
50007630		Retaining ring hexagonal
50007629		Retaining ring round
50010414		Valve needle lock (SMS-02/-22)
5000xxxx	WST-...	Wearing parts kit for SMS-22 (Standard), VITON



Processing & Application / Spraying / Valve

## SMS-22 – SPRAY VALVE SERIES 22

### ACCESSORIES

Item number	Order Code	Designation
50008879	PS2-002-G18-A	Pressure sensor 2 [bar]
50008758	PS1-010-G18-A	Pressure sensor 10 [bar]
50008756	PS1-050-G18-A	Pressure sensor 50 [bar]
50008785		G1/8" Mounting system pressure sensor
50007634	HZP-90-25W-01	Heating plate
50007804	HZP-ISO-01	Insulating plate
50008400	WLG-40-470-SOFT-500	WALTHER LOGIC Limit Value Module incl. software
50008752	WLVC-30-320-SOFT-323	WALTHER LOGIC Valve Control incl. software
50008746	WLVCM-10-101-SOFT-101	WALTHER LOGIC Valve Control MINI incl. software
50007662	RKS-01	Cleaning for valves
50007773	WZS-03	Tool set for valve maintenance
50010323	SAVE-NV-01	SAVE Valve needle lock
5000xxxx	WST- ...	Connecting screw joint matching the valve

### TECHNICAL DATA

Process pressure	max. 35 [bar]
Control air pressure	min. 5 to 6 [bar]
Atomizer air pressure	0,5 to 5 [bar]
Process connection (medium)	G1/4" incl. hose screw joint 6/4
Process connection (air)	hose screw joint 6/4
Dimensions l x w x h	131 x 23,5 x 57,5 [mm]
Weight	0,5 [kg]
Nozzle & needle	optionally hardened (kolsterised)