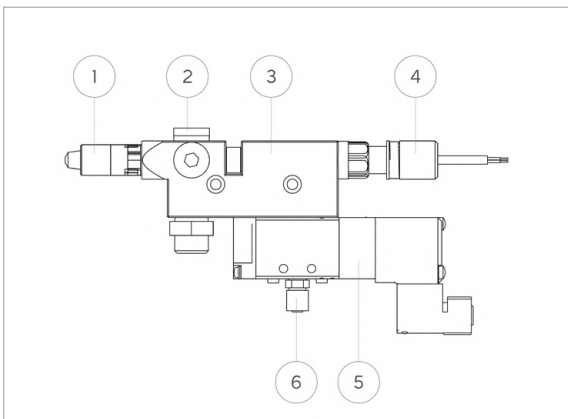
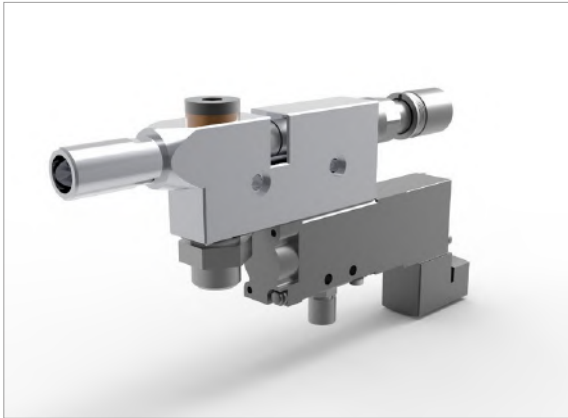




Processing & Application / Dosing / Valve

VMS-02 – FULL-JET VALVE



HIGHLIGHTS

- Broad spectrum of use for different media and wide range of viscosity
- high flexibility due to replaceable nozzle and dosing needle
- optional heating plate available for valve tempering

USAGE

The Full-jet Valves of the VMS-02 series are used for a continuous, time-controlled application of viscous media, e.g. the bead application. The mutual air application on the valve piston causes the opening and closing of the valve needle in the nozzle. If the control air is turned off or fails, a spring will safely close the valve nozzle. An electro-pneumatic 5/2-way valve is directly flanged to the valve, activating the control air according to the electric inlet signal.

CONSTRUCTION

- 1 Nozzle
- 2 Locking screw
- 3 Valve body
- 4 Raster-needle lock
- 5 Magnetic valve with plug
- 6 Screw joint

YOUR BENEFITS

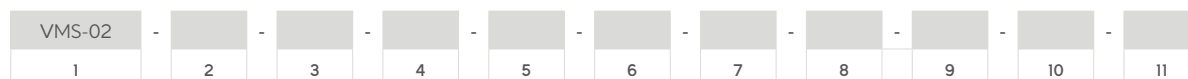
- Adjustable dosing volume
- compact design, excellent integration into any production system
- low weight, ideal for high traversing speeds
- possibility for realising a process control in connection with a WALTHER LOGIC Limit Value Module



VMS-02 – FULL-JET VALVE

ORDER CODE

(* STANDARD OPTIONS)



1	Designation	5	Pressure sensor	6	Nozzle diameter
	Full-jet Valve Series 02	T00	upper boring with plug	03	0,3 [mm]
		T02	0 to 2 [Bar]	05	0,5 [mm]*
2	Sealing Material	T10	0 to 10 [Bar]	08	0,8 [mm]
V	Viton*	T50	0 to 50 [Bar]*	10	1,0 [mm]*
I	Isolast	L00	boring left with plug	15	1,5 [mm]
E	EPDM	L02	0 to 2 [Bar]	20	2,0 [mm]
		L10	0 to 10 [Bar]		
3	Needle stroke adjustment	L50	0 to 50 [Bar]	7	Nozzle form
R	with sensor*	R00	boring right with plug	LV	long dosing nozzle*
N	without sensor*	R02	0 to 2 [Bar]	LL	Luerlock-Adapter**
		R10	0 to 10 [Bar]	G8	Adapter G1/8*
4	Save	R50	0 to 50 [Bar]	8	Material of housing
S	installed*			M	brass nickel-plated*
N	not installed*			E	stainless steel

STANDARD VARIANTS

Item number	Order Code	Item number	Order Code
50010298	VMS-02-V-N-N-T00-05-G8-M	50010402	VMS-02-V-N-S-T00-10-LV-M
50010299	VMS-02-V-N-N-T00-05-LL-M	50010407	VMS-02-V-N-S-T50-05-G8-M
50010316	VMS-02-V-N-N-T00-05-LV-M	50010406	VMS-02-V-N-S-T50-05-LL-M
50010301	VMS-02-V-N-N-T00-10-G8-M	50010405	VMS-02-V-N-S-T50-05-LV-M
50010302	VMS-02-V-N-N-T00-10-LL-M	50010410	VMS-02-V-N-S-T50-10-G8-M
50010303	VMS-02-V-N-N-T00-10-LV-M	50010409	VMS-02-V-N-S-T50-10-LL-M
50010395	VMS-02-V-N-N-T50-05-G8-M	50010408	VMS-02-V-N-S-T50-10-LV-M
50010394	VMS-02-V-N-N-T50-05-LL-M	50010310	VMS-02-V-R-N-T00-05-G8-M
50010393	VMS-02-V-N-N-T50-05-LV-M	50010311	VMS-02-V-R-N-T00-05-LL-M
50010398	VMS-02-V-N-N-T50-10-G8-M	50010312	VMS-02-V-R-N-T00-05-LV-M
50010397	VMS-02-V-N-N-T50-10-LL-M	50010313	VMS-02-V-R-N-T00-10-G8-M
50010396	VMS-02-V-N-N-T50-10-LV-M	50010314	VMS-02-V-R-N-T00-10-LL-M
50010401	VMS-02-V-N-S-T00-05-G8-M	50010315	VMS-02-V-R-N-T00-10-LV-M
50010400	VMS-02-V-N-S-T00-05-LL-M	50010377	VMS-02-V-R-N-T50-05-G8-M
50010399	VMS-02-V-N-S-T00-05-LV-M	50010376	VMS-02-V-R-N-T50-05-LL-M
50010404	VMS-02-V-N-S-T00-10-G8-M	50010375	VMS-02-V-R-N-T50-05-LV-M
50010403	VMS-02-V-N-S-T00-10-LL-M	50010380	VMS-02-V-R-N-T50-10-G8-M



Processing & Application / Dosing / Valve

VMS-02 – FULL-JET VALVE

Item number	Order Code	Item number	Order Code
50010379	VMS-02-V-R-N-T50-10-LL-M	50010384	VMS-02-V-R-S-T00-10-LV-M
50010378	VMS-02-V-R-N-T50-10-LV-M	50010389	VMS-02-V-R-S-T50-05-G8-M
50010383	VMS-02-V-R-S-T00-05-G8-M	50010388	VMS-02-V-R-S-T50-05-LL-M
50010382	VMS-02-V-R-S-T00-05-LL-M	50010387	VMS-02-V-R-S-T50-05-LV-M
50010381	VMS-02-V-R-S-T00-05-LV-M	50010392	VMS-02-V-R-S-T50-10-G8-M
50010386	VMS-02-V-R-S-T00-10-G8-M	50010391	VMS-02-V-R-S-T50-10-LL-M
50010385	VMS-02-V-R-S-T00-10-LL-M	50010390	VMS-02-V-R-S-T50-10-LV-M

SPARE PARTS

Item number	Order Code	Designation
500xxxxx	VNV-02-xx-xx-xxxx	Valve needle Full-jet Valve
500xxxxx	DVV-02-xx-xx	Nozzle Full-jet Valve
50007228		Valve needle lock VMS-02 without needle stroke sensor
50007229		Valve needle lock VMS-02 with needle stroke sensor
50010652		Wearing parts set ISOLAST
50010648		Wearing parts set FKM
50010621		Magnetic valve with connecting plug

ACCESSORIES

Item number	Order Code	Designation
50008879	PS2-002-G18-A	Pressure sensor-2 [bar]
50008758	PS1-010-G18-A	Pressure sensor-10 [bar]
50008756	PS1-050-G18-A	Pressure sensor-50 [bar]
50008785		G1/8" Mounting system Pressure sensor
50007751	HZP-90-25W-07	Heating plate
50007835	HZP-ISO-07	Insulating plate
50007618		Centering sleeve (2x)
50008400	WLG-40-470-SOFT-500	WALTHER LOGIC Limit Value Module incl. software
50008752	WLVC-30-320-SOFT-323	WALTHER LOGIC Valve Control incl. software
50008746	WLVC-M-10-101-SOFT-101	WALTHER LOGIC Valve Control MINI incl. software
50007662	RKS-01	Cleaning kit for valves
50007773	WZS-03	Tool set for valve maintenance
50010324	SAVE-NV-02	SAVE Valve needle lock
5000xxxx	WST- ...	Connecting screw joint matching the valve



Processing & Application / Dosing / Valve

VMS-02 – FULL-JET VALVE

TECHNICAL DATA

Control air pressure	6 [bar]
Material pressure	max. 100 [bar]
Weight	375 [g]
Dimensions KV-version l x w x h	144x15x82 [mm]
Dimensions LV-version l x w x h	162x15x82 [mm]
Connection „material“	G1/8
Connection „control air“	Screw joint for hose 6/4
Available nozzle diameters	0,2 / 0,3 / 0,5 / 0,8 / 1,0 / 1,2 / 1,5 / 2,0 / 2,5 [mm]
Material – nozzle	stainless steel
Needle	carbide
Sealings	Viton