

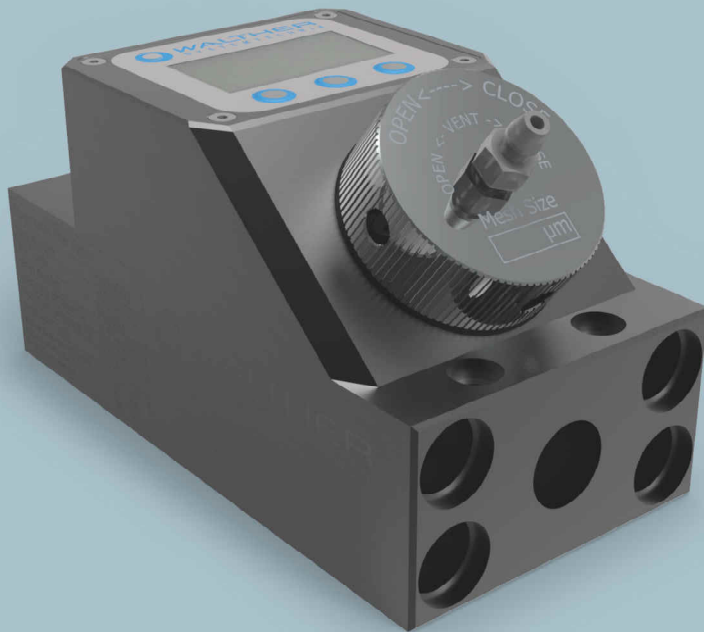
SUPPLYING.  
DOSING.  
APPLYING.

WALThER  
SYSTEMTECHNIK



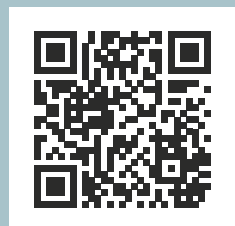
WFSD-01

# DIAGNOSE-CAPABLE FILTER SYSTEM



Degree of  
contamination,  
cartridge lifetime,  
medium temperature:  
WFSD-01 keeps an  
eye on everything.

- Continuous monitoring of different process values
- Display for parametering and status indication
- Digital outlets and fieldbus connection for connection to superordinate control units
- Robust design of filter cartridges



PRODUCT INFORMATION

# THE WFSD-01 IS FILTERING LUBRICANTS EFFECTIVELY AND MONITORS RELIABLY

## INCREASE THE QUALITY OF YOUR PRODUCTION AND REDUCE UNPLANNED MACHINE STANDSTILLS.

The diagnose-capable Filter System WFSD-01 retains contaminations in the lubricants and will thereby protect all subsequent process components. Through its integrated electronics, it will display the current degree of contamination of the filter cartridge at any point in time, and will signal possible deviations from the limit values. This helps you reduce unplanned machine standstills and increases the system availability. As part of a 'predictive maintenance', you can now plan the replacement of the filter cartridge as part of parallelly conducted maintenance work. The diagnose-capable filter unit will also monitor process values such as inlet and outlet pressure, medium temperature and the lifetime

of the filter cartridge, based upon pre-defined limit values. A password protection will prevent any unauthorized changes in the device configuration. After replacing a filter cartridge, the device can be vented by means of a venting screw.

As a module of the Modular Series, the Diagnose-capable Filter Unit has a compact design, can be easily installed and can be integrated in any dosing and application system. Above that, flanging it to other modules of the series is fast and easy.

---

### TECHNICAL DATA

Product description	WFSD-01
Supply voltage	24 [VDC]
Dimensions	152 x 80 x 82 [mm]
Weight	1900 [g]
Medium pressure	min. 10 / max. 200 [bar]
Digital outlets	4 X 24 [V DC]
Fieldbus	RS485 MODBUS-RTU
Filter cartridges	150 [µm] mesh size > WZF- 150-01 300 [µm] mesh size > WZF-300-01 500 [µm] mesh size > WZF-500-01