

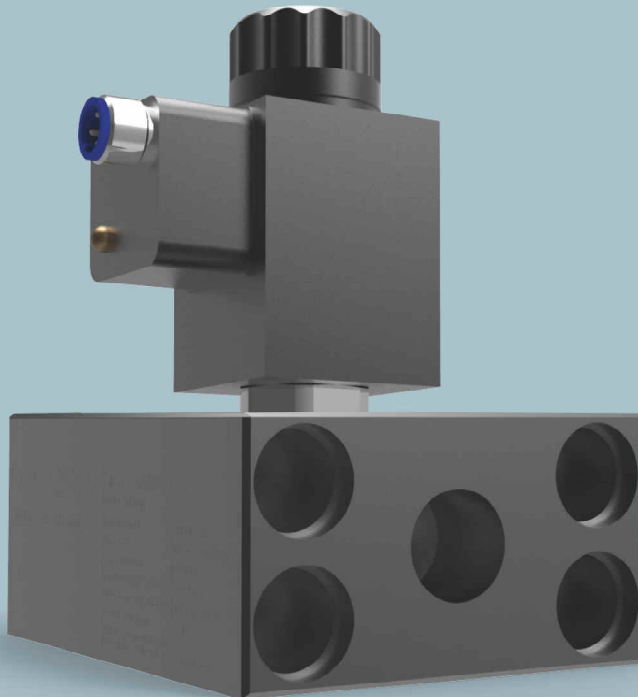
SUPPLYING.
DOSING.
APPLYING.

WALThER
SYSTEMTECHNIK



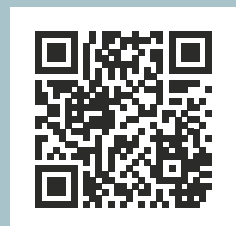
WGV-22-01

2/2-WAY STOP VALVE



WGV-22-01:
Needs very
little space for
integration into
existing systems.

- Reliable control / stopping of medium flows
- Entirely electric controlling
- Fast switching times, high switching frequencies
- Compact, robust and low in wear
- Versatile



PRODUCT INFORMATION

OPEN AND CLOSE THE MEDIA FLOWS EXACTLY AND RELIABLY WITH WGV-22-01

THE COMPACT STOP VALVE FOR A NEEDS-BASED DESIGN AND EXTENSION OF YOUR LINE SYSTEMS.

The WGV-2/2 is a compact stop valve with an excellent performance thanks to its optimum design and an electro-mechanical valve actuator. When integrated into your line system, you can open and close the flow with the WGV-2/2 and will allow/not allow your medium to flow. The WGV-2/2 comes with a medium outlet and two switching points. In normal mode, and depending on the version, it is spring-reset open or closed. The valve is electrically controlled and does not need compressed air for controlling, in contrast to ball valves with a pneumatic drive; therefore, it does not need much space and can be easily integrated into existing systems. The electric control allows fast switching times

and high switching frequencies. The WGV-2/2 is suitable for low to highly viscous media as well as for pressures up to 200 bar. It has optimum flow values, is robust, low in wear and can be used for medium temperatures from 4 to 55 °C.

As a module of the Modular Series, the Stop Valve WGV-22-01 has a compact design, can be easily installed and can be integrated in any dosing and application system. Above that, flanging it to other modules of the series is fast and easy.

TECHNICAL DATA

Product description	WGV-22-01
Allowed operating pressure	200 [bar]
Switching time and frequency	50 - 60 ms; 2000/h
Volume flow	bis zu 20 l/min (NLGI 2)
Material connection	G1/2" (in/out)
Supply voltage	24 [VDC]
Allowed operating temperature	4 - 55 [°C]
Weight	1,2 [kg]
Dimensions (L x B x H)	102 x 125 x 87 [mm]